

NEW 920KW PHOTOVOLTAIC POWER PLANT IN MARKET PARITY

SUNGROW INVERTERS
SG60KTL | SG80KTL-20

CHALLENGE

Second project in Market Parity for this company, realized once again with Sungrow inverter. The solar radiation and favorable weather conditions, typical of this area of Italy, favor a profitable production of photovoltaic energy, which can advantageously compete with what the Sicilian electricity grid offers.

SOLUTION

The PV plant is installed on the ground on an agricultural land and has a power slightly less than 1 MW. As for the previous PV plant built not far away, in Fulgatore, the SG60KTL string inverters have been chosen, known for their extreme versatility and reliability, as Sungrow's best-seller in the whole European area for several years. To achieve exactly the power required by the customer, an SG80KTL-20 inverter has also been added.

BENEFIT

The string inverters themselves bring numerous advantages to the management of the photovoltaic system, both in the construction phase and for maintenance once they are in operation. They are IP65 and therefore can be left outdoors and string-level monitoring guarantees timely intervention in the event of problems on the side of the photovoltaic modules.

Location

Contrada Soria (TP), Sicily, IT



Ground mounted PV plant
3.264 PV modules

New installation with
Sungrow inverters
SG60KTL e SG80KTL-20

14 string inverters SG60KTL plus
1 string inverter SG80KTL installed
under the module mousing system

Expected annual production
1.353 MWh



OTT Service s.r.l.

PV plant owner:
OTT Group

DESCRIPTION

The photovoltaic generator has a DC power of 913,92 kWp; it is mounted on fixed structures on the ground, on an agricultural land. The total quantity of photovoltaic modules is 3,264 pieces, single brand, 280Wp power in polycrystalline silicon, arranged vertically on two rows with south orientation.

14 Sungrow SG60KTL inverters plus 1 SG80KTL-20 inverter were installed, fixed on the same support structure used for the photovoltaic modules, almost all along the same west side of the plant.

The photovoltaic plant was connected to the grid in December 2019, construction operations lasted about 2 months.



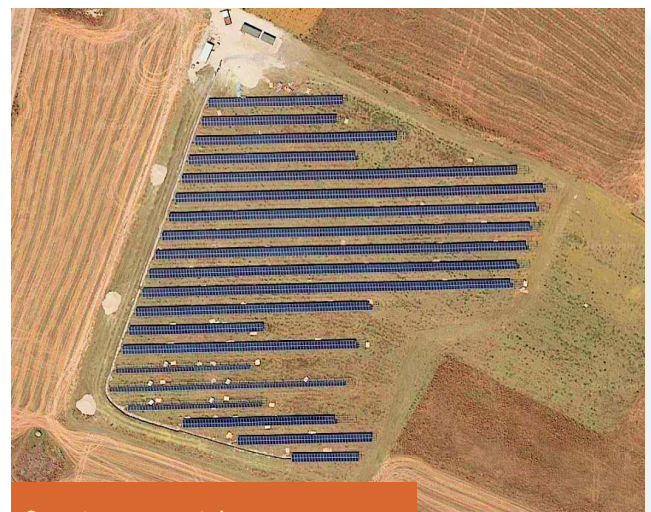
String is better

It is now proven by numerous applications that the use of string inverters for large PV systems is the winning choice compared to the installation of central inverters



Discover the intruder

To achieve the desired system power, an SG80KTL-20 inverter was also installed.



Country geometries

The plant can also be identified from the satellite in the middle of this wonderful Sicilian countryside.

Design and implementation of activities were performed in collaboration of Sungrow and OTT Group.

Sungrow Power Supply Co., Ltd ("Sungrow") is a world-class technology provider, specialized in PV inverters and energy storage equipment for residential, commercial & industrial and utility-scale PV power plants. Founded in 1997, Sungrow is a solution-oriented and innovation-led organization focusing on renewable energy generation. Sungrow EMEA's headquarter is based in Munich, Germany, with local subsidiaries in Italy, Spain, France, UK and Turkey. The Company has shipped more than 8 GW of PV and Storage products to key markets in the region, mostly in the utility-scale segment.

Sungrow Deutschland GmbH